

Corners to be Indexed

ALL CORNERS IN SECTION 36-106-40

FEB 14 2023

*Karen Brown*

I hereby certify that this document and the data contained herein was prepared by me or under my direct supervision.

*Daniel L. Bueltel*  
Daniel L. Bueltel

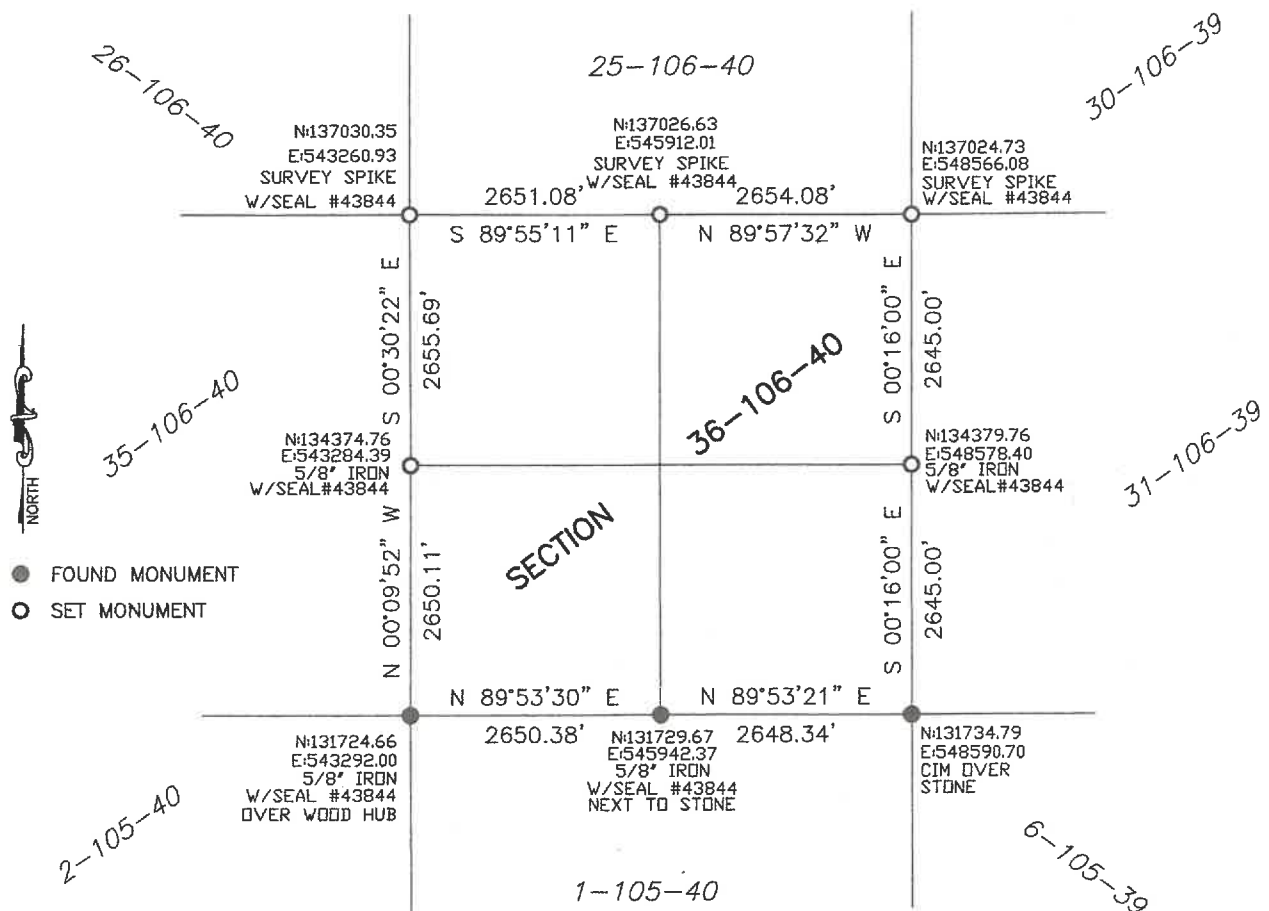
License No. 43844

*1/16/2023*  
Date

## CERTIFICATE OF LOCATION OF GOVERNMENT CORNER

Land survey monuments situated in Section 36, Township 106, Range 40, 5TH P.M.

STATE OF MINNESOTA, County of MURRAY



Murray County Coordinate System (1996 Adj.)

## Statement of Evidence

### **NE 36-106-40**

On November 21, 1902 J.W. Woolstencroft located a 5"x6"x16" grey stone at the corner.

In 1940 a concrete monument was located at the corner.

Sheet No. 8 of 32 of State Proj. No. 51-606-03 plans show a concrete monument at the corner.

On October 15, 1975, Murray County Highway Department located a concrete monument 36" below the surface. A ½" steel pin was placed above the monument and 3 ties were set.

On May 4, 2022, Bueltel-Moseng Land Surveying searched for the corner and found nothing. Set a survey spike with seal #43844 using county ties.

### **N1/4 36-106-40**

Sheet No. 7 of 32 of State Proj. No. 51-606-03 plans show a concrete monument at the corner.

On October 15, 1975, Murray County Highway Department located a concrete monument 3' below the surface. An iron pin was set above the concrete monument and 4 ties were set.

On May 4, 2022 Bueltel-Moseng Land Surveying searched for corner and found nothing. Set a survey spike with seal #43844 using county ties.

### **NW 36-106-40**

Sheet No. 6 of 32 of State Proj. No. 51-606-03 plans show a steel pin at the corner.

On October 15, 1975, Murray County Highway Department located a concrete monument with an iron pin in the center 3' below the surface. An iron pin was set above the monument and 4 ties were set.

On May 4, 2022 Bueltel-Moseng Land Surveying searched for corner and found nothing. Set a survey spike with seal #43844 using county ties.

### **E1/4 36-106-40**

On May 4, 2022, Bueltel-Moseng Land Surveying set a 5/8" iron with seal #43844 midway and online between section corners.

### **W1/4 36-106-40**

On May 4, 2022, Bueltel-Moseng Land Surveying set a 5/8" iron with seal #43844 midway between section corners and in the center line of the township road.

### **SW 36-106-40**

On August 29, 1899, Murray County placed a government mound and pit at the corner.

On May 4, 2022, Bueltel-Moseng Land Surveying located remnants of a wooden hub at the corner down 3'±. Accepted the location of the hub and set a 5/8" iron with seal #43844.

### **S1/4 36-106-40**

On April 18, 1925, Murray County found a stake with a large stone on the west side at the corner.

On May 4, 2022, Bueltel-Moseng Land Surveying located a large stone with remnants of a wooden stake on the west side of a large stone. Accepted the stone and place a 5/8" iron with seal #43844 in replace of the wooden stake.

### **SE 36-106-40**

On March 29, 1973, Murray County Highway Department located a large field stone at the corner.

On May 4, 2022, Bueltel-Moseng Land Surveying located a large field stone 3'± below the surface at the corner. Set a cast iron monument over the stone.